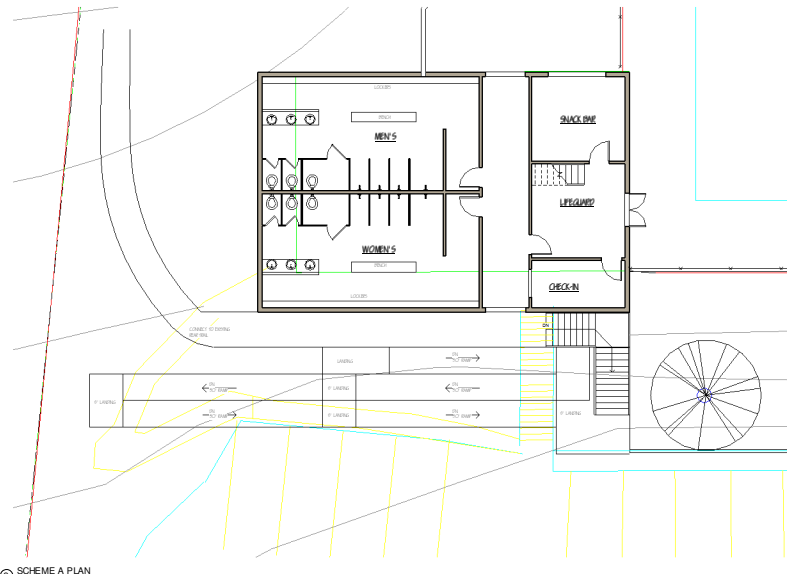


① EXISTING PLAN
1/8" = 1'-0"



② SCHEME A PLAN
1/8" = 1'-0"



Ponte Mellor Architects, Ltd.
3225 Wisconsin Ave., Suite 453
Bethesda, Maryland 20814
P 301.652.9338
F 301.652.9551

Seal

MOHICAN HILLS CLUBHOUSE
7117 MACARTHUR BLVD
BETHESDA, MD 20817

EXISTING PLAN & SCHEME A

Issued
Concept Design
08/27/2009

Project Number: 0423.04

A



Ponte Mellor Architects, Ltd.
3223 Wisconsin Ave., Suite 403
Bethesda, Maryland 20814
P 301.652.9338
F 301.652.9551

Seal

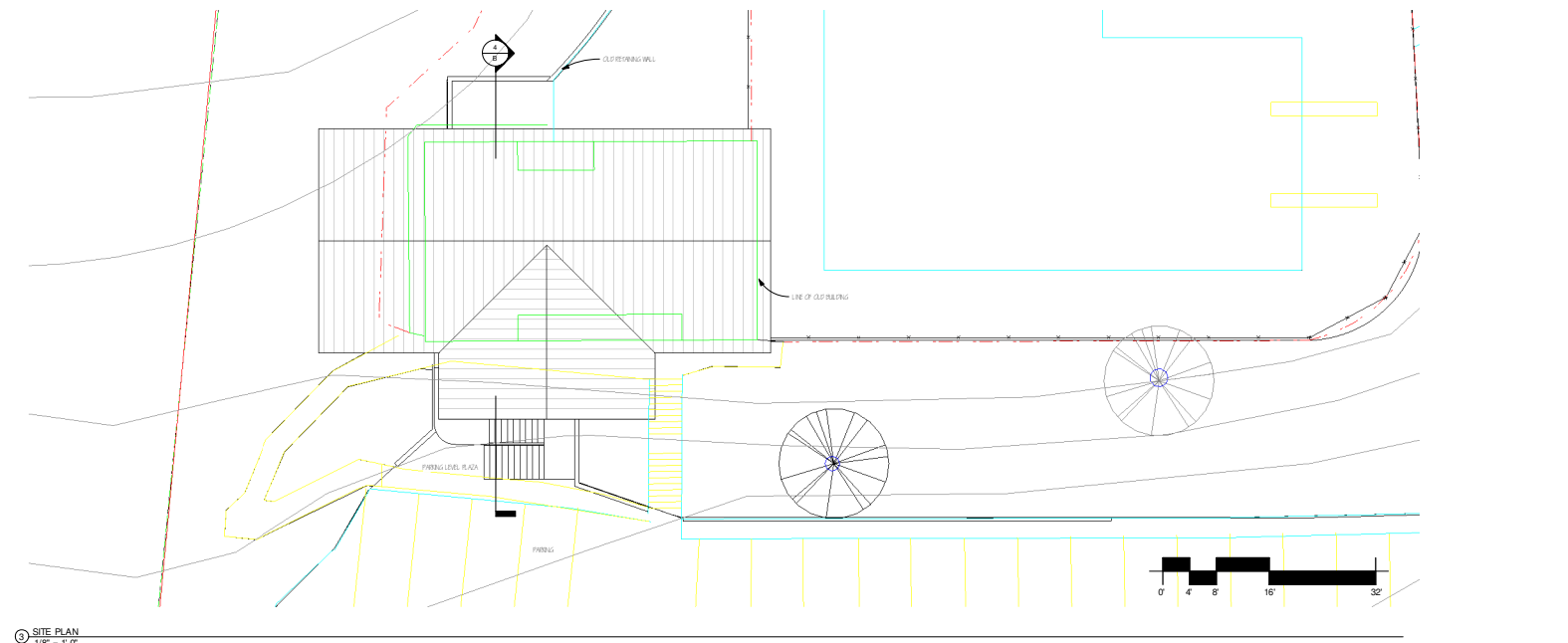
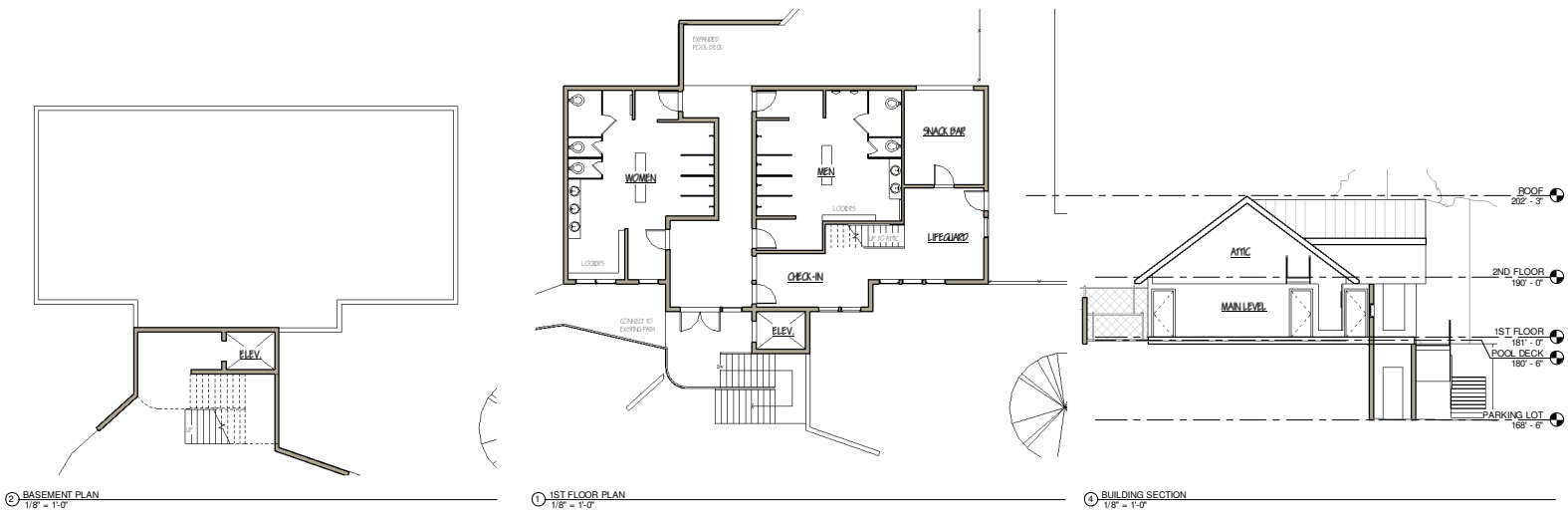
MOHICAN HILLS CLUBHOUSE
7117 MACARTHUR BLVD
BETHESDA, MD 20817

CONCEPT PLAN
- SCHEME B

Issued
Concept Design
08/27/2009

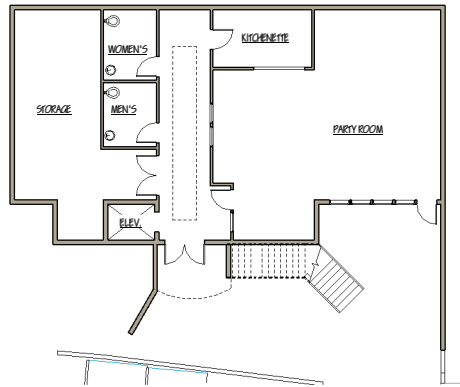
Project Number: 0423.04

B

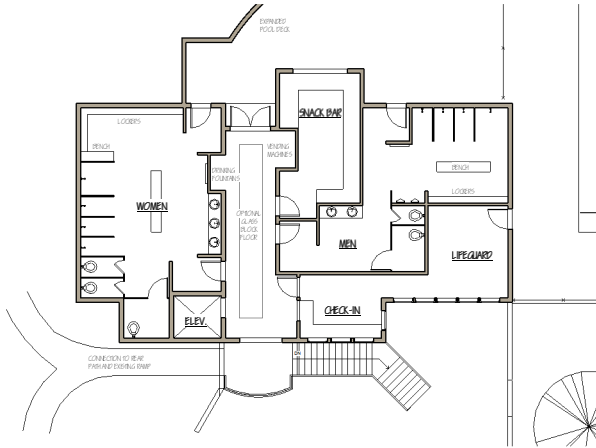


Reproduction of these plans without express written permission or consent of Ponte Mellor Architects, Ltd. violates the copyright laws of the United States.

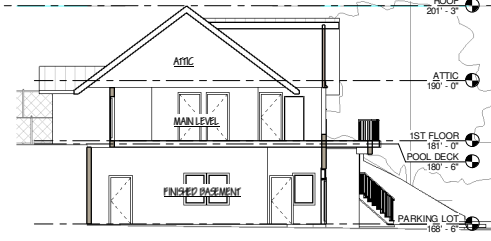
P:\2009\0823\04 Mohican Hills Clubhouse\0423\042304.dwg



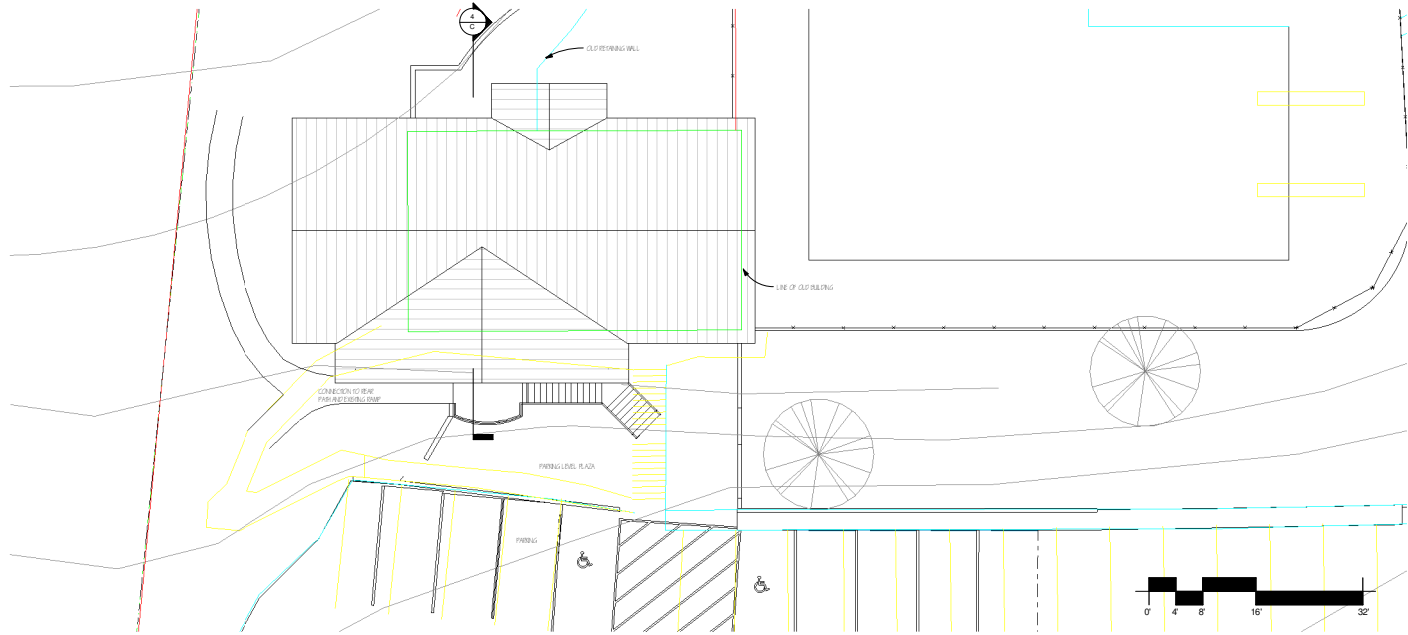
2 BASEMENT PLAN
1/8" = 1'-0"



1 1ST FLOOR PLAN
1/8" = 1'-0"



4 BUILDING SECTION
1/8" = 1'-0"



3 SITE PLAN
1/8" = 1'-0"



Ponte Mellor Architects, Ltd.
2228 Wisconsin Ave., Suite 453
Bethesda, Maryland 20814
P I 301.652.9336
301.652.9551

Seal

MOHICAN HILLS CLUBHOUSE
7117 MACARTHUR BLVD
BETHESDA, MD 20817

CONCEPT PLAN
- SCHEME C

Issued
Concept Design
08/27/2009

Project Number: 0423.04

C



Ponte Mellor Architects, Ltd.
 3225 Wisconsin Ave., Suite 453
 Bethesda, Maryland 20814
 P 301.652.9338
 F 301.652.9551

Seal

MOHICAN HILLS CLUBHOUSE
 7117 MACARTHUR BLVD
 BETHESDA, MD 20817

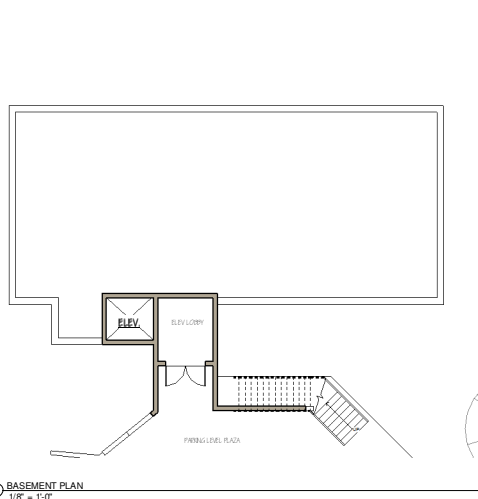
CONCEPT PLAN
 - SCHEME D

Issued
 Concept Design
 08/27/2009

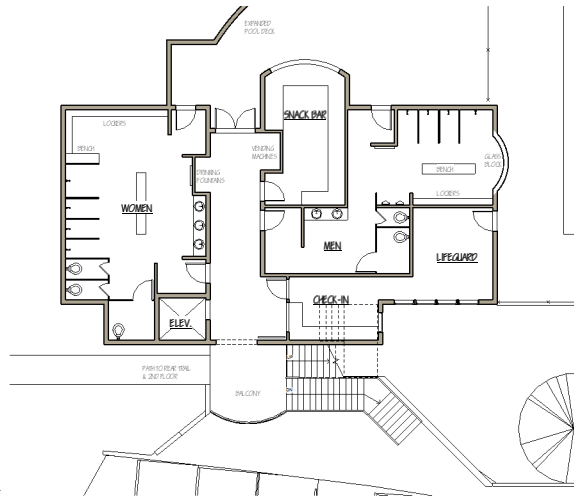
Project Number: 0423.04

D

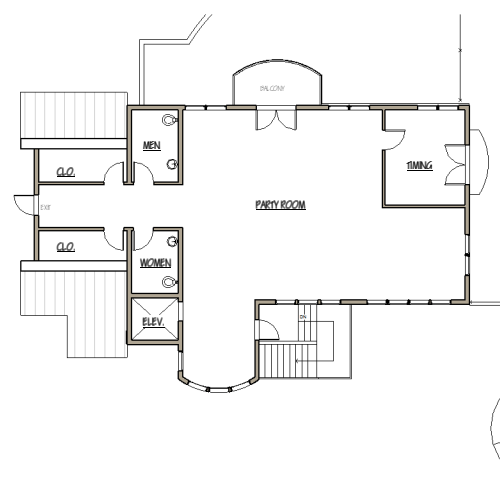
08/27/2009



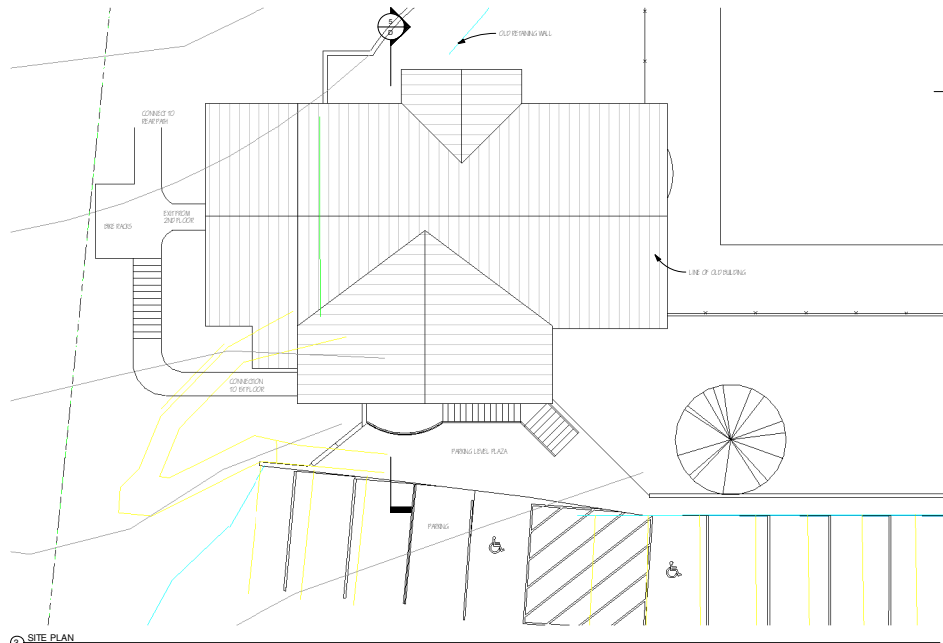
2 BASEMENT PLAN
 1/8" = 1'-0"



1 1ST FLOOR PLAN
 1/8" = 1'-0"



4 2ND FLOOR PLAN
 1/8" = 1'-0"



3 SITE PLAN
 1/8" = 1'-0"



5 BUILDING SECTION
 1/8" = 1'-0"

